



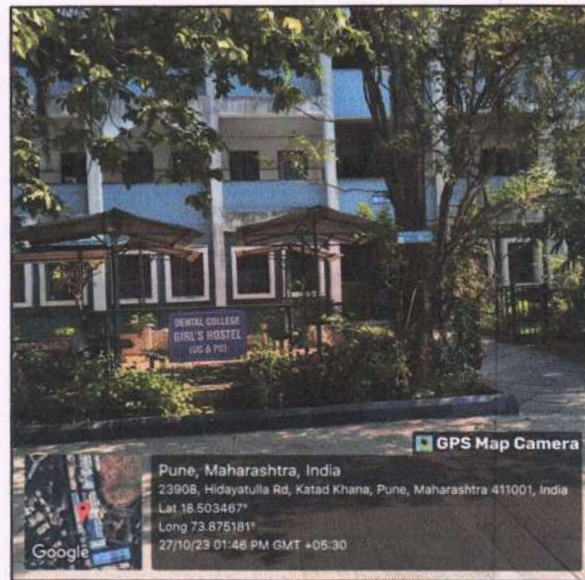
M.C.E. Society's

M.A. RANGOONWALA COLLEGE OF DENTAL SCIENCES & RESEARCH CENTRE, PUNE

- i) Recognized by the Government of India
- ii) Affiliated to the Maharashtra University of Health Sciences, Nashik.

2390-B, K.B. Hidayatullah Road, Azam Campus, Camp, Pune-411001 (Maharashtra)
Tel: 91-20-26430959, 26430960, 26430961 Fax No. 91-20-26430962
E-mail: info@mardentalcollege.org Website : www.mardentalcollege.org

4.1.3 Geo-tagged photographs of Campus facilities



Girls hostel



Canteen



Green campus



R. R. R.
PRINCIPAL

M. A. RANGOONWALA COLLEGE OF DENTAL SCIENCES & RESEARCH CENTRE, PUNE



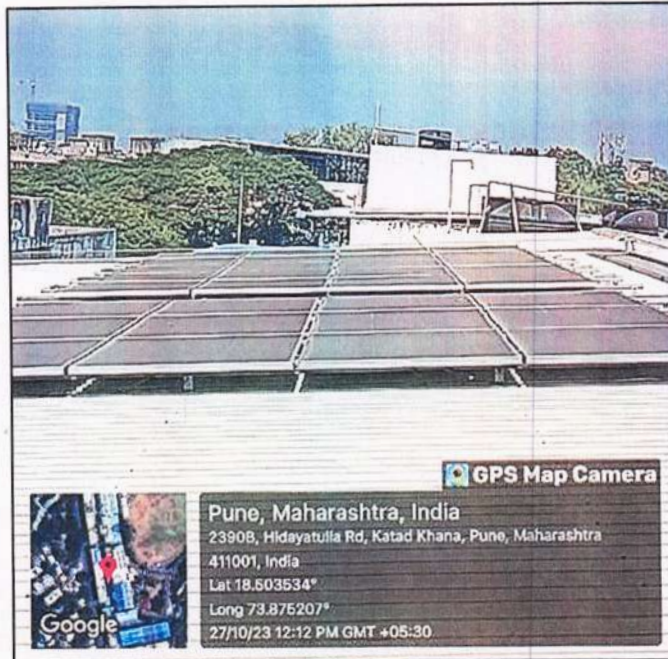
Muslim-Co-operative Bank and ATM (Azam Campus)



Bio-medical waste collection



ARhat
PRINCIPAL
 M. A. RANGOOJWALA COLLEGE OF DISTANCE EDUCATION
 SCIENCES & RESEARCH CENTRE, PUNE



Solar panels- alternative energy source



Wi -fi facility



(Handwritten Signature)

PRINCIPAL
M. A. RANGOONWALA COLLEGE OF DENT/
SCIENCES & RESEARCH CENTRE, PUNE



Parking Area



A. Dhas
PRINCIPAL
M. A. RANGONWALA COLLEGE OF DENTAL SCIENCES & RESEARCH CENTRE, PUNE

SIGNAGES



AR

PRINCIPAL

**M. A. RANGONYIA COLLEGE OF DENTAL
SCIENCES & RESEARCH CENTRE, PUNE**



M.A. Rangonwala

PRINCIPAL

**M. A. RANGOONWALA COLLEGE OF DENTAL
SCIENCES & RESEARCH CENTRE, PUNE**